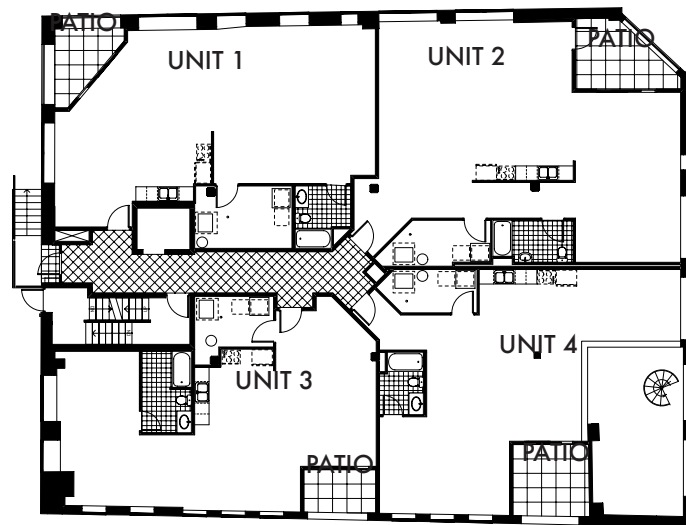




view from Colwell street



typical floorplan



conceptual sketch



existing elevation



proposed elevation

Uptown, Pittsburgh PA • 2005

Conversion of an old 2 story bottling plant to an 8 unit loft style condominium with indoor parking by adding 3rd story. All units were designed to be handicap adaptable. Bath and kitchen create a separation of private and living area in an otherwise completely open plan.