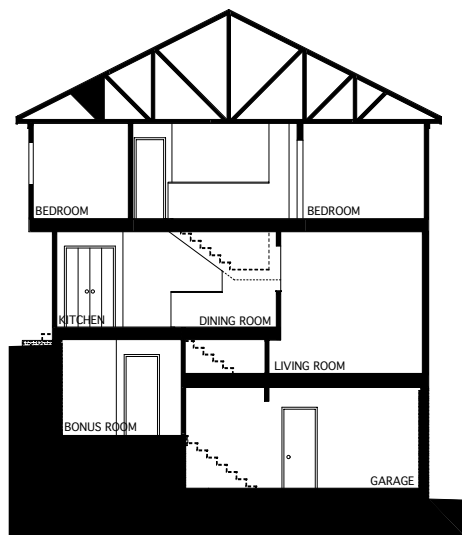




Downhill Units



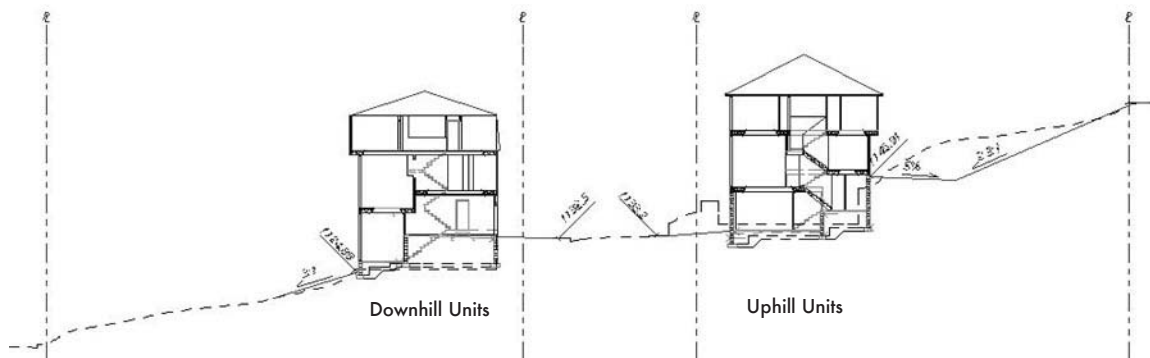
Uphill Units



Section



Completed Uphill Units



Site Section

Fineview, Pittsburgh, PA • 2004

The steep infill site in a small urban neighborhood provided opportunities to design "Affordable Homes" with amenities such as integral garages, and living rooms with 12' high ceilings and spectacular views. Two prototype designs were created to step up or down the site to take full advantage of the hill while saving on foundation costs.