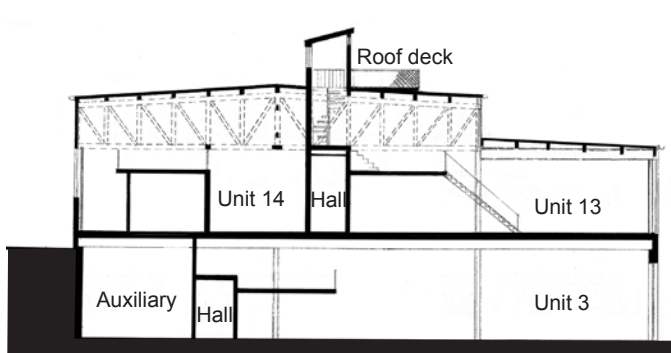




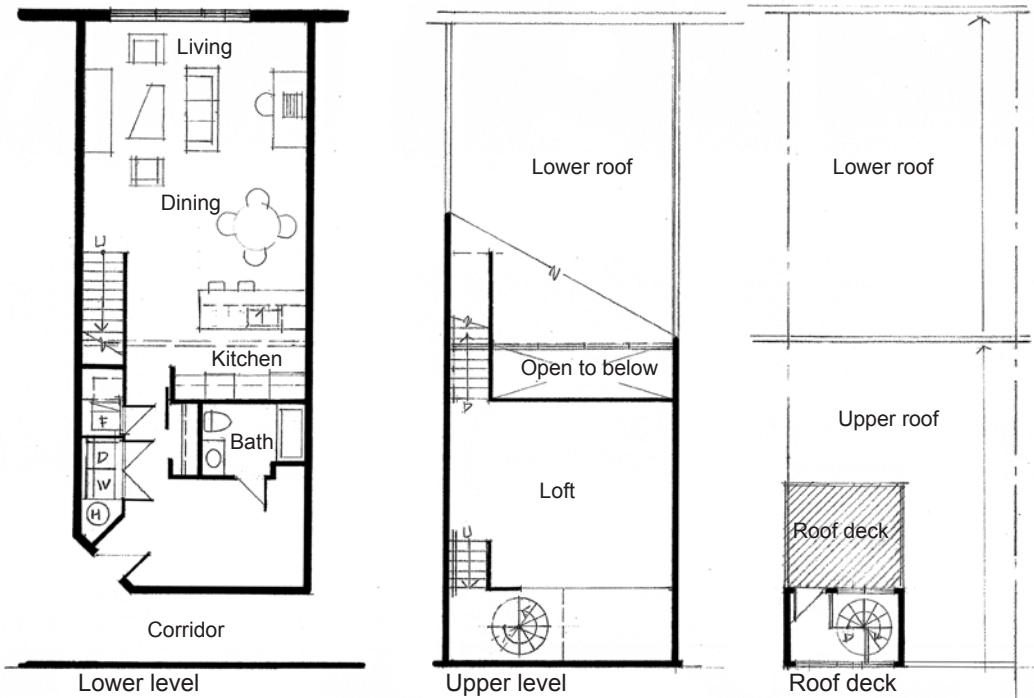
Proposed elevation



Proposed section



Existing facade



Bloomfield, Pittsburgh PA • Proposed Design 2008

A 90 years old window factory at the edge of a commercial district was proposed to be converted into 16 unit totalling 34,000 SF. The building had potential for spectacular loft units as one story high steel roof trusses span the entire width of the building with continuous clerestory and 12 feet high windows on both sides. Most units were designed to have private yards to accommodating pets or roof deck access.