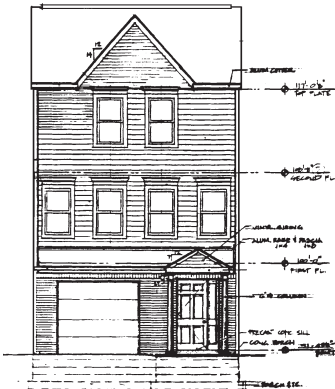
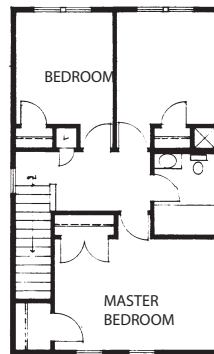


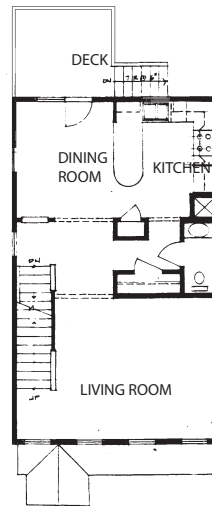
SITE PLAN



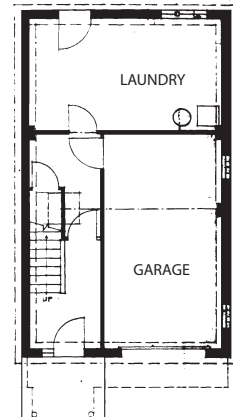
FRONT ELEVATION



SECOND FLOOR PLAN



FIRST FLOOR PLAN



BASEMENT FLOOR PLAN

Fineview, Pittsburgh, PA • 1992

Phased construction of twelve detached single family homes. Three bedroom designs including walk-up and first floor entries to account for the changing topography over the site for the North Side Civic Development Council with URA assistance. Working with neighborhood community organization, the site development process triggered the rewriting of Pittsburgh Zoning Code to include urban contextual siting of building, for the Zoning Code prepared in 1954 was geared toward suburban style developments.