

## Green Strategies Used Throughout CCI Center Gold LEED Certified

### Adaptive Re-use of a 1910 Building

- Tall spaces with embossed metal ceilings
- Wood floors
- Interior brick walls
- Interior elevator openings converted to ventilation stacks

### Conference and office addition

- Two story addition with landscaped porch and roof top garden
- Maximum use of natural conditioning, daylighting and ventilation

### Integrated building systems

### Energy Efficient Design

- High Insulation levels in walls and attic
- Exposed interior brick walls and concrete floors provide thermal storage
- Photovoltaic panels to augment the building's electric needs
- Extensive daylighting coordinated with indirect fluorescent lighting with electronic ballast and T-8 lamps
- High performance operable windows to allow natural ventilation with daylight blinds for glare control
- Zoned gas fired heating and air conditioning with separate ventilation system incorporating heat recovery
- Radiant floor heating system in the conference room
- Surface mounted wall raceway for power, voice and data distribution

### Environmentally Sound Building Materials and Techniques

- AgriBoard structural insulating panels
- Non-toxic finish and cleaning materials
- Resilient flooring



### Water Conserving Plumbing

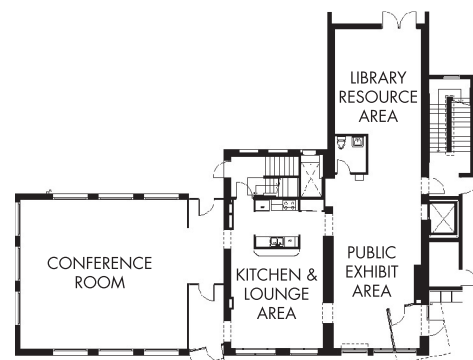
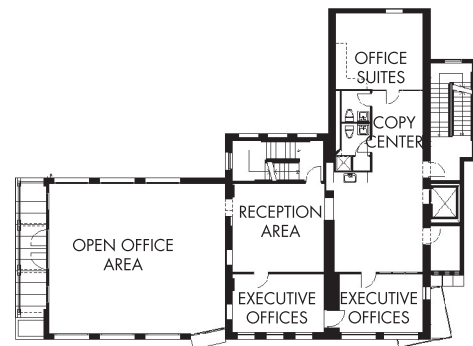
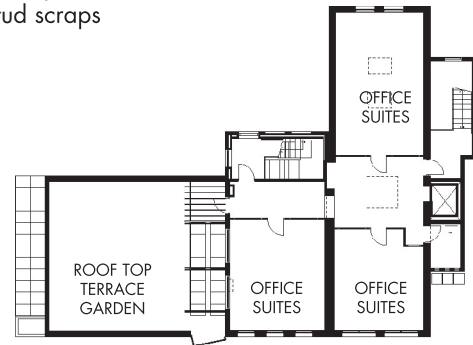
- Rainwater collection and irrigation system
- Low-flow toilets, faucets and showerheads

### Recycled Building Materials

- Bricks
- Rough lumber and shelving stock
- Recycled/refurbished kitchen
- Recycled structural steel framing
- Recycled steel studs
- Drywall with recycled content

### Recycling During Construction

- Drywall scraps
- Wood scraps
- Steel stud scraps



CCI Center, Southside, Pittsburgh, PA

GOLD LEED CERTIFIED

Contextual adaptive reuse and addition to a 1910 historic building in the South Side. The project has implemented, for educational purposes, many strategies for a sustainable, highly effective workplace design and was a team effort between the client, the architect and the contractor. This building was Gold LEED certified in 2006.